

Appliances & Sustainability

Selecting and managing appliances in the IoT era.

How much energy do I use? Is my lifestyle sustainable for me... for my community... for my planet? How can I change? What should I change?

We are all increasingly preoccupied by these questions as the environmental situation worsens and energy costs rise. But what tools are there to help us navigate these concerns and make wise decisions?

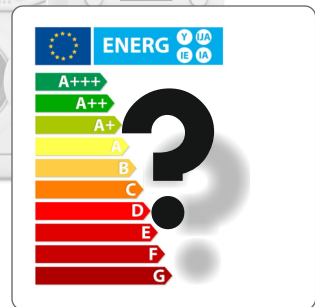
Aware but Unarmed

Throughout the European Union, new appliances are rated for their consumption. In countries like France¹, meters for home electrical installations also provide estimates of consumption by category: heating, cooling, hot water, etc.

But these indications are too far removed from our specific situations and daily decisions.

What is the difference between category A and B appliances? What is the impact of my clothes washer's ECO mode? What about the consumption of my old or used appliances?

The tools that are in place to help us only encourage awareness but leave us disarmed our daily decisions about energy consumption.



Good data guides behavior

Knowing how our appliances perform and how we use them are crucial to good purchasing decisions. Why replace a rarely used oven instead of an old water heater that contributes twenty times more to my annual electricity usage. Often our purchasing decisions are made for esthetic reasons.

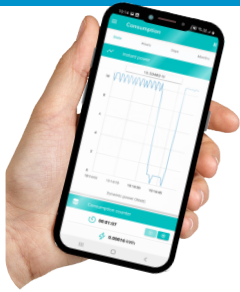
What about appliance energy-saving modes? Do we use them? Do they have an impact on consumption.

Getting precise data about specific cases can help us make meaningful, durable changes in our homes and our behavior.

¹. Required as a result of Thermal Regulation 2012 which became effective in January 2013.

WattTap Appliance Energy Meter

Precision cost-effective energy metering for your appliances.



WattTap is a generic energy meter that can easily be added to any appliance. It connects to a smartphone app and provides energy consumption data for specific periods for any appliance. WattTap lets you see precisely where energy is consumed in your home and where you can make changes that have a meaningful impact on energy consumption and cost.

Low-Cost, Easy-to-Implement on Any Appliance

Secure, Wireless Meter

WattTap is an open hardware design that is based on the IoTize TapNLink wireless modules. It retrofits any appliance for energy metering by **connecting directly to the mains power cord**. It is designed for low-cost, low-power consumption and security.

Smartphone Connectivity

WattTap with **Near Field Communication²** connects your smartphone with a simple tapping. Data is stored only on the WattTap and on your phone.

The IoTize supplied app provides visibility of hourly, weekly or monthly consumption of that appliance. It can even measure consumption during specific events (ex. while running a wash cycle).



Wi-Fi

Create Your Own App

Appliance owners can use the IoTize WattTap app or create their own metering apps. It takes just a few minutes with IoTize's Tap Manager app.

Users simply select the data they want to represent and the graphical representation. Everything is done directly on the mobile phone. No coding or expensive tools are required.

² WattTap metering hardware is also available with Wi-Fi allowing direct connection to home networks and energy metering platforms on a home PC or cloud service.